



Complex Conversations: A Place Apart



Prilla Smith Brackett
Matt Brackett



Complex Conversations: A Place Apart

Prilla Smith Brackett
Matt Brackett

**February 6 –
April 10, 2005**

The Art Complex Museum
189 Alden Street
Duxbury, Massachusetts 02331

Exhibition curated by
Craig Bloodgood.

Opening Reception
February 6, 2005
1:30 pm – 3:30 pm

Artists' Talk
March 6, 2005
1:30 pm

Gallery hours
Wednesday through Sunday
1:00 pm – 4:00 pm
Admission is free.

For information and directions
visit www.artcomplex.org
or call 781.934.6634

Matt Brackett (Pictured above)
We All Have Something to Do (claim)
13 $\frac{1}{2}$ "h x 10" w
Oil on panel
© 2004



Prilla Smith Brackett

Touchstone: from the plant room

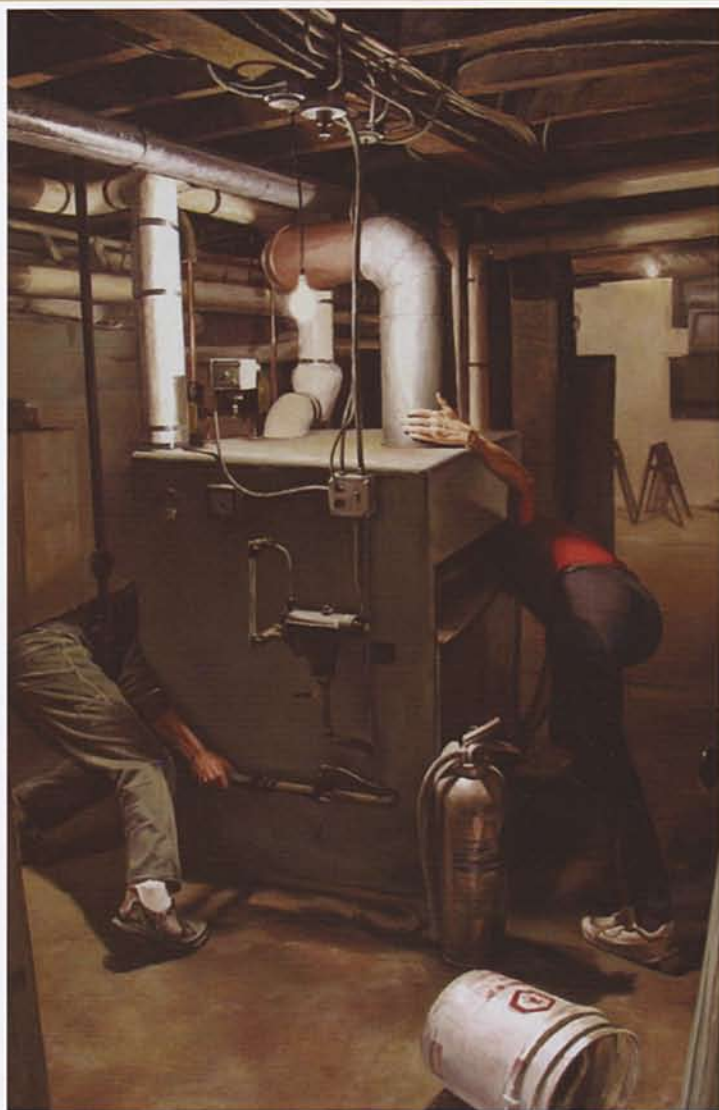
42¹/₈" h x 20¹/₄" w

Acrylic and oil on canvas

© 2004

Complex Conversations exhibitions were designed to invite two artists to exhibit together when there is a correspondence between their works. Painters Prilla Smith Brackett and Matt Brackett, mother and son, beautifully exemplify this goal in their Phoenix Gallery show, "A Place Apart." They each explore an old family home in Duxbury, but their perspectives on the house and their style of painting are very different.

Prilla Smith Brackett, well respected for her paintings of landscape, chooses to explore the interaction of parts of the house with the landscape, as seen from indoors looking out. We are invited to observe trees, windows, chairs and beds that are still, silent and empty. She has made landscape and architecture the referent for her memories and those of her family. In Prilla's work, landscape is captured and framed by the squares and angles of the house. These fragmented images of landscape emphasize how memories become incomplete. She often applies layers of translucent color, almost like scrims, to her paintings. These ghost-like areas become metaphors for memories that overlap and weave into each other and are difficult to grasp completely.



Matt Brackett
Heart to Heart
48" h x 31" w
Oil on canvas
© 2004

While Prilla's paintings present the view of a contemplative family member, the members themselves are the subject of Matt's work. His masterfully painted characters are actively involved in indecipherable and mysterious tasks. Sometimes ominous, sometimes humorous, their multigenerational inhabitants uncover, pry open, and penetrate the house. They poke their heads in unlikely places to try to decipher meaning, and often use tools from Matt's carpentry past that conjure metaphors of psychological work. Rendered with light, intense color and emotionally charged perspectives reminiscent of Caravaggio, his characters actively grapple with the story of the house and its occupants, yet leave no easy answers for the viewer.

The family home depicted in these paintings is soon to be sold, a victim of circumstances beyond control. Matt Brackett and Prilla Smith Brackett invite us to reflect with them on a 90-year history of family and place, of landscape and activity, of memory and imagination, of love and loss.

Catherine Mayes
Senior Curator
The Art Complex Museum